



Small Business Round Table Meeting

20 Sept 2018

Presented to:

Small Business Industry

Presented by:

CAPT Tommy Neville

Director of Contracts

Commander, Navy Regional Maintenance Center (CNRMC)

Small Business Round Table Agenda

Time	Topic	Speaker	Objective
0830-0900	Seating	All Attendees	
0900-0930	Welcome/Port Workload Overview	CAPT Tommy Neville CDR Oscar Moreno	Objective: Provide a Workload overview
0930-1000	PSO/PSI Update	CDR Mike Violette PSI Leads	Objective: Provide Private Sector Optimization and Private Sector Improvement initiatives
1000-1030	Non-Complex MAC Update	CAPT Tommy Neville	Objective: Provide the latest update on the non-complex MAC contracts.
1030-1100	Questions/Answers and wrap up.	CAPT Tommy Neville	Objective: Meeting wrap up.



Port Workload Forecast

20 Sept 2018

Presented to:
Small Business Industry

Presented by:
CDR Oscar Moreno

Business Director
Commander, Navy Regional Maintenance Center (CNRM)



**MARMC / SWRMC / SERMC /
NWRMC / HRMC / SRF-JRMC
Total Private Sector Workload Estimate
including MOD estimates (no AIT)
FY18 - FY21
as of 01 AUG 2018

(POM 20 Data)**

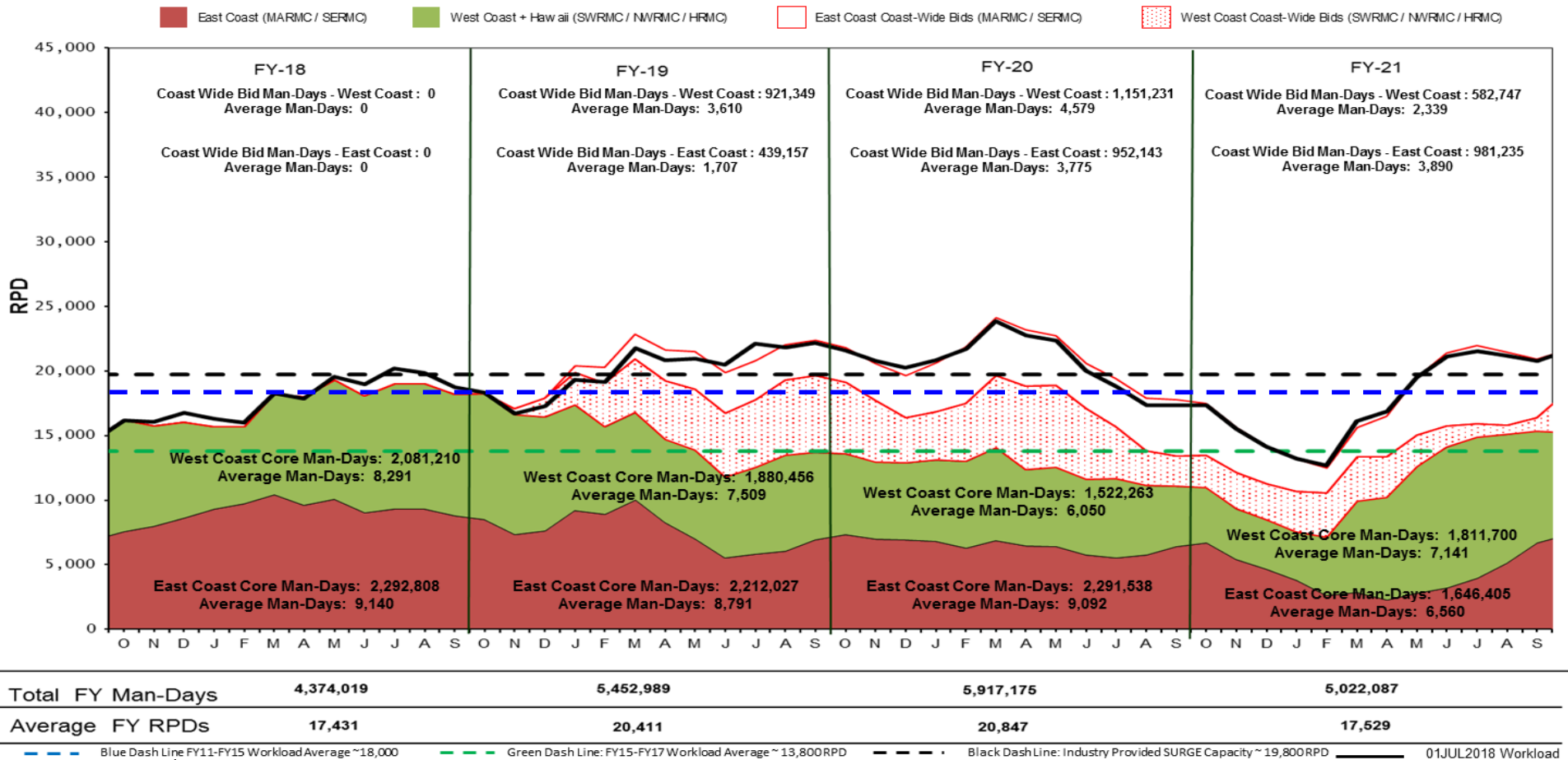


Total Private Sector Workload



Data Date: 08/01/2018

Total Private Sector Workload including MOD estimates (no AIT) By COAST (No FDRMC) Roll-Up FY18 - FY21 As of 01 AUG 2018



EXECUTING 50 CONUS SURFACE SHIP CNO AVAILABILITIES
100+ ships in Advance Planning / Planning Phase

01 AUG 2018



MARMC Private Sector Workload Forecast with MOD estimates (no AIT) FY18 - FY21 as of 01 AUGUST 2018

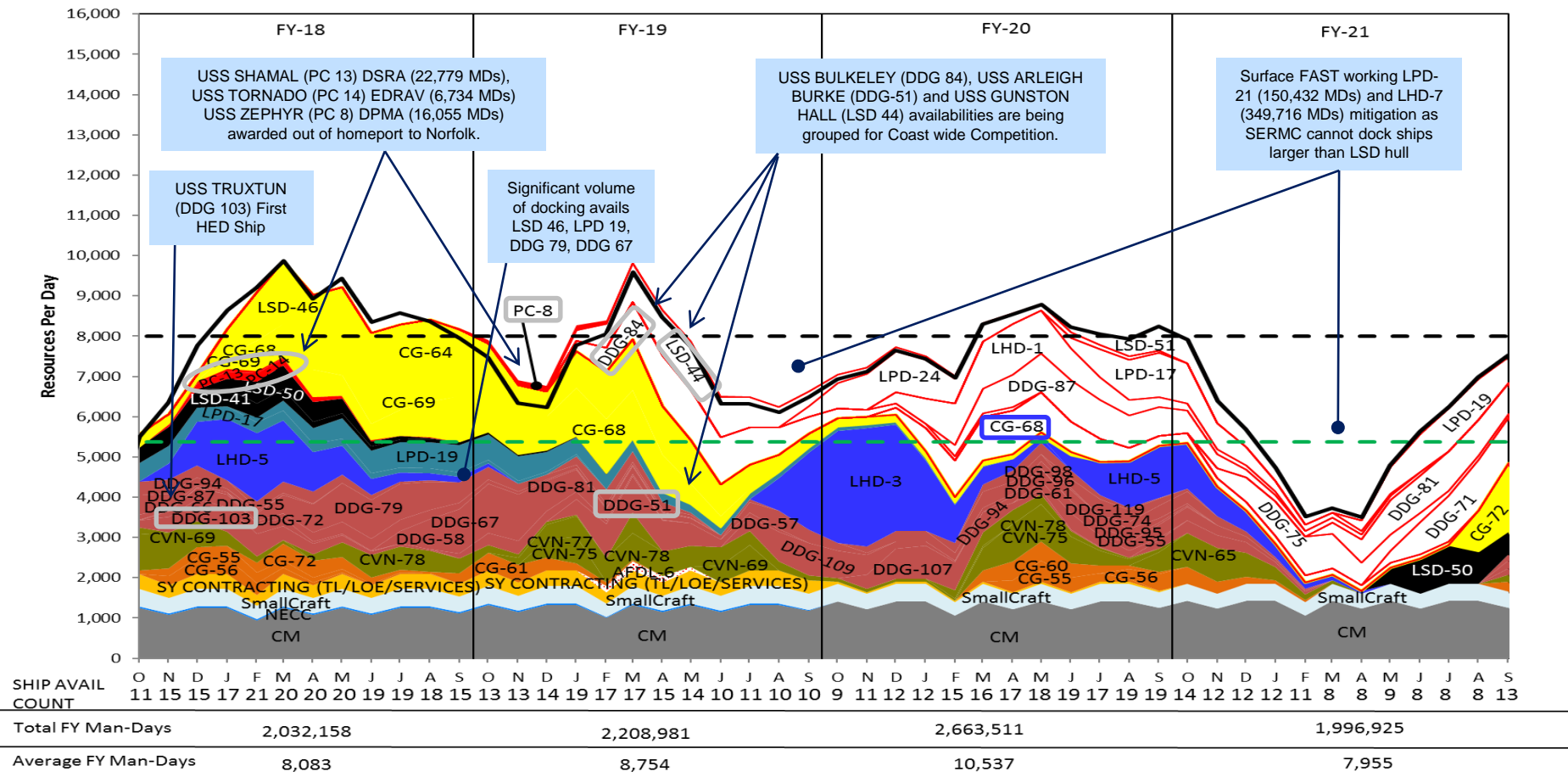


Workload Color Legend:



MARMC Private Sector
Workload Estimate with MOD (no AIT) FY18-21
Baseline as of 01 Aug 2018

Date: 08/01/2018



Man-day Totals and Averages now include Coast Wide Bids



SERMC Private Sector Workload Forecast with MOD estimates (No AIT) FY18 - FY21 as of 01 AUGUST 2018

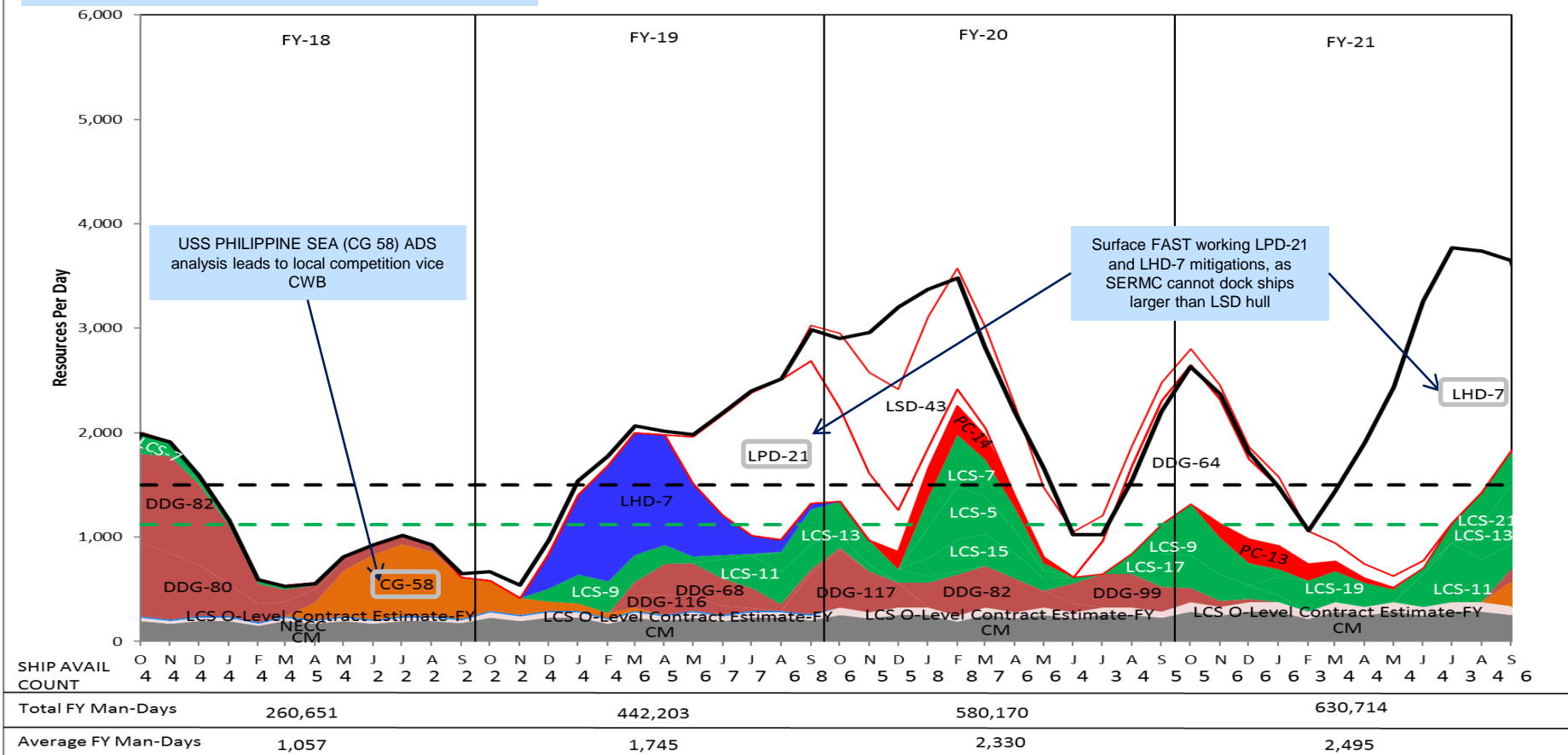


Workload Color Legend:



USS SHAMAL (PC 13) DSRA (22,779 MDs), USS TORNADO (PC 14) EDRAV (6,734 MDs) and USS ZEPHYR (PC 8) DPMA (16,055 MDs) awarded out of homeport to Norfolk.

SERMC Private Sector
Workload Estimate with MOD (no AIT) FY18-21
Baseline as of 01 Aug 2018



Man-day Totals and Averages now include Coast Wide Bids



NAVSEA
NAVAL SEA SYSTEMS COMMAND



NWRMC Private Sector Workload Forecast with MOD estimates (No AIT) FY18 - FY21 as of 01 AUGUST 2018



Workload Color Legend:



Small Craft

S/Y Contracting



DDG

Coast-Wide Contracting Strategy (CWB)

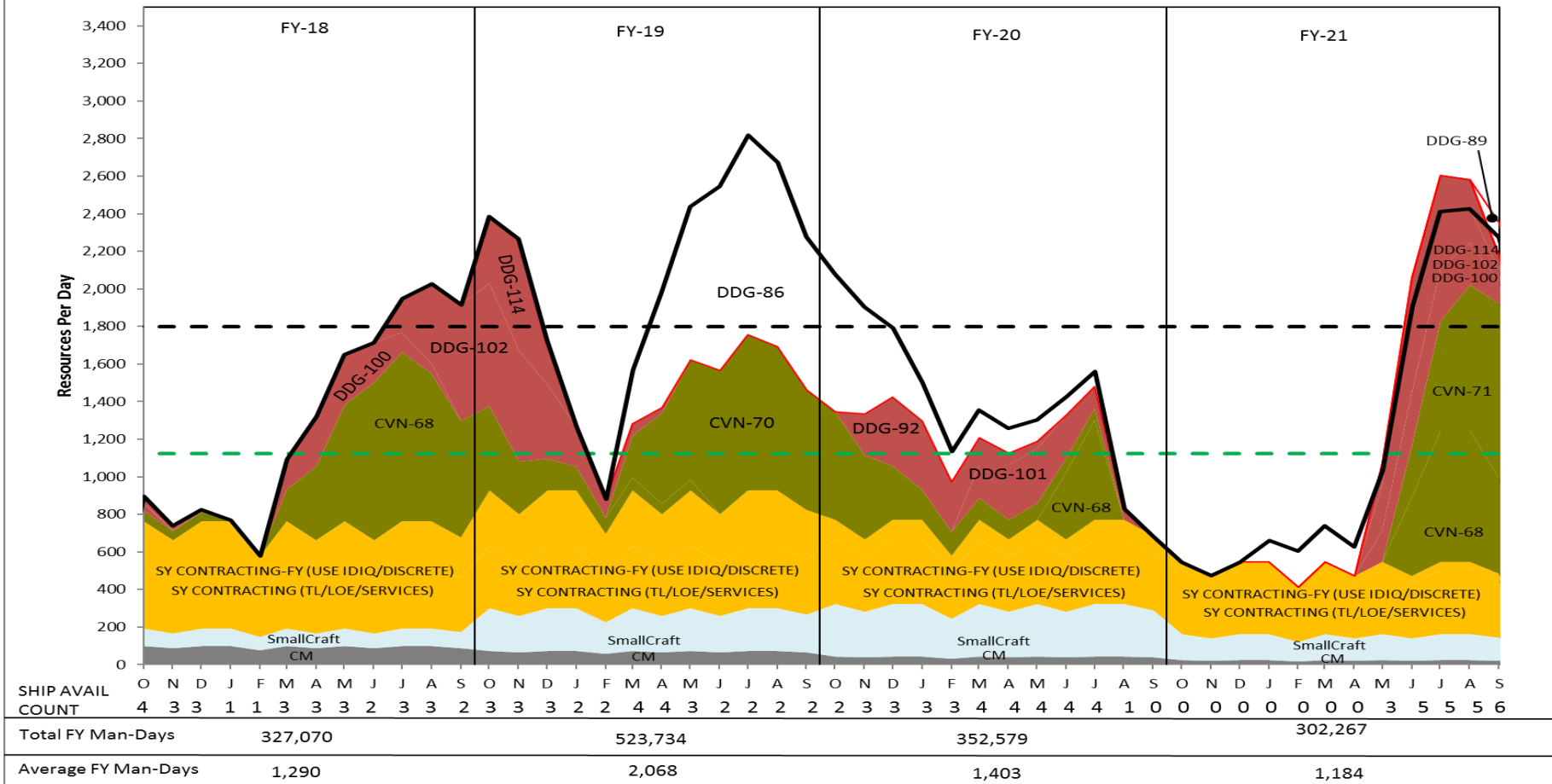
Green Dash Line 3-Year Historical Workload Average = 1,124 RPD

Black Dash Line: Industry Provided SURGE Capacity = 1,800 RPD

01JUL2018 WORKLOAD

NWRMC Private Sector
Workload Estimate with MOD (no AIT) FY18-21
Baseline as of 01 Aug 2018

Date: 08/01/2018



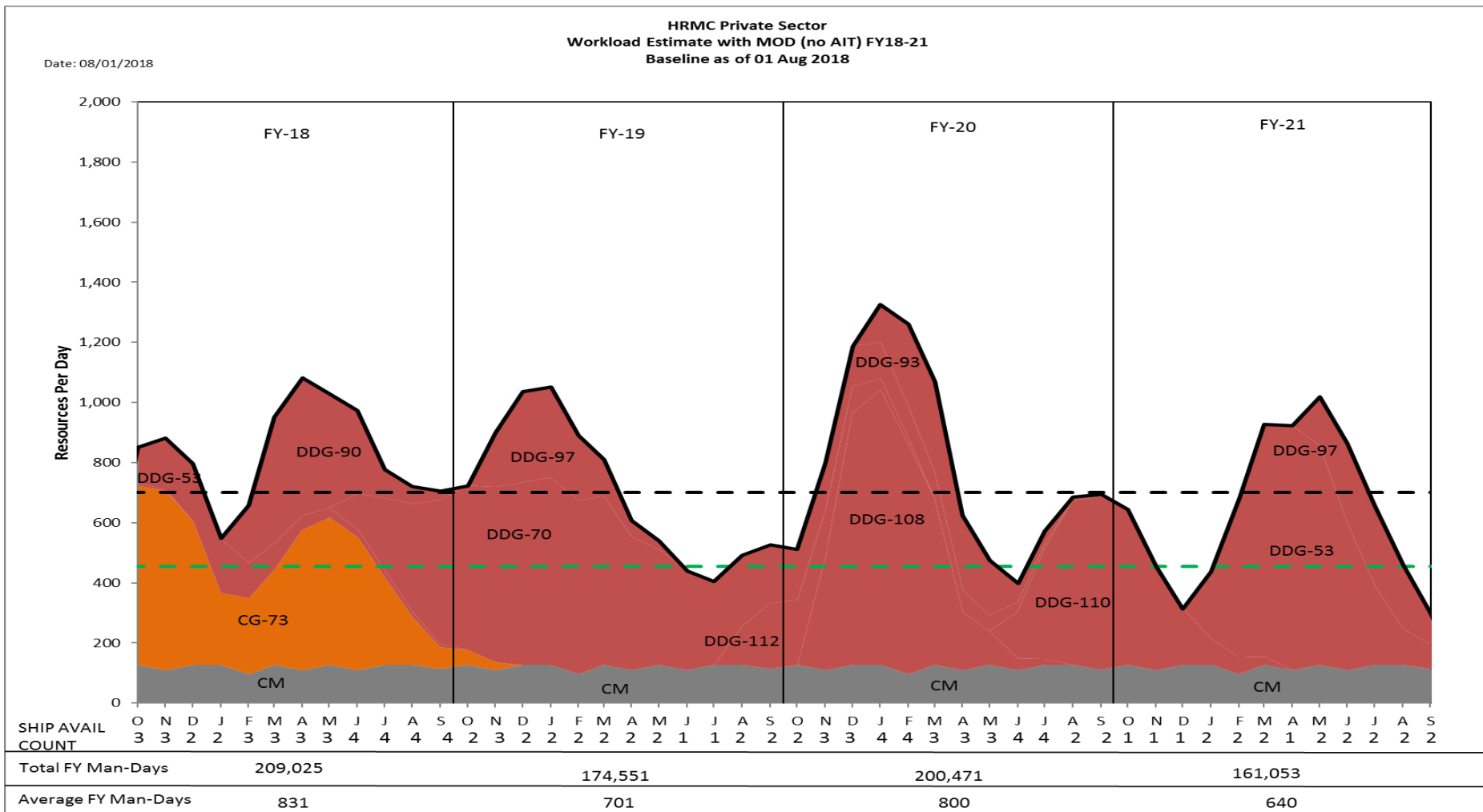
Man-day Totals and Averages now include Coast Wide Bids



HRMC Private Sector Workload Forecast with MOD estimates (No AIT) FY18 - FY21 as of 01 AUGUST 2018



Workload Color Legend: CM CG DDG
 --- Green Dash Line: 3-Year Historical Workload Average = 455 RPD
 --- Black Dash Line: Industry Provided SURGE Capacity = 700 RPD
 — 01JUL2018 WORKLOAD



Man-day Totals and Averages now include Coast Wide Bids



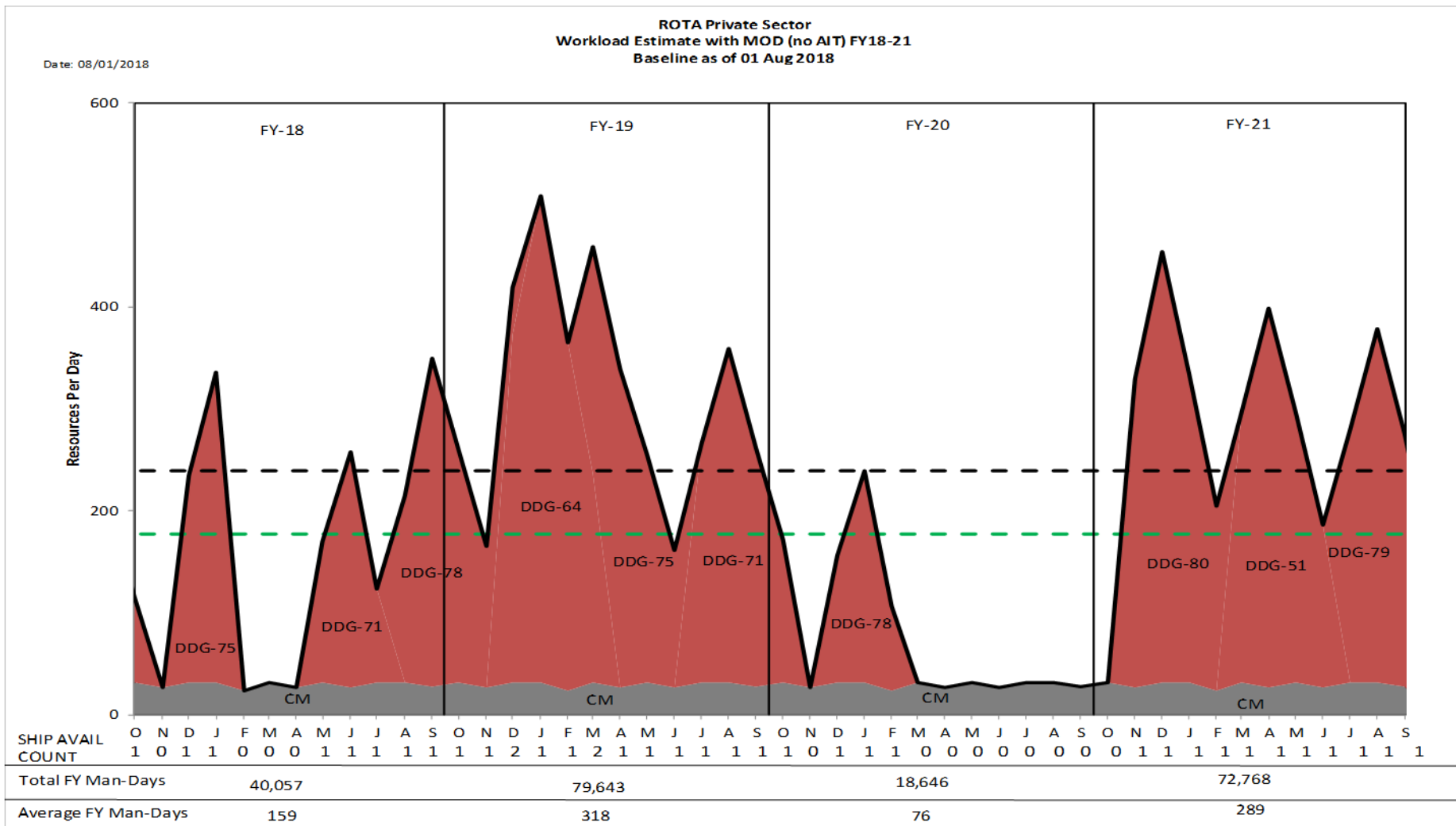
FDRMC - ROTA

Workload Forecast with MOD estimates (No AIT) FY18 - FY21

as of 01 AUGUST 2018



Workload Color Legend: CM DDG
 - - - - Green Dash Line: 3-Year Historical Workload Average = 177 RPD - - - - Black Dash Line: (135% of Historical Workload Average) SURGE Capacity = 239 RPD _____ 01JUL2018 WORKLOAD



Man-day Totals and Averages now include Coast Wide Bids



FDRMC - BAHRAIN

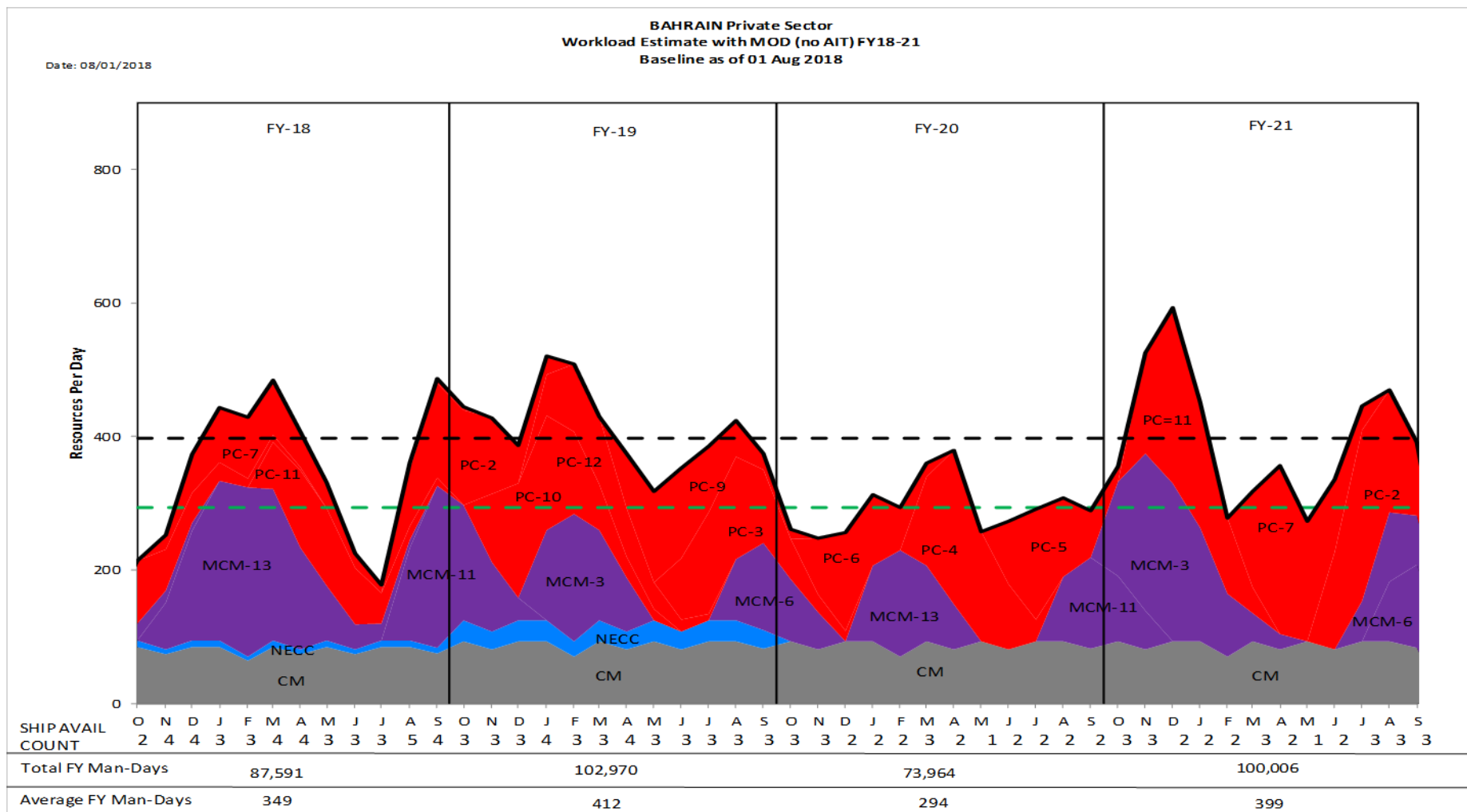
Workload Forecast with MOD estimates (No AIT) FY18 - FY21

as of 01 AUGUST 2018



Workload Color Legend: CM NECC MCM PC

Green Dash Line 3-Year Historical Workload Average = 294 RPD Black Dash Line: Industry Provided SURGE Capacity = 397 RPD 01JUL2018 WORKLOAD



Man-day Totals and Averages now include Coast Wide Bids



SRF-JRMC YOKOSUKA
Workload Forecast with MOD estimates (no AIT) FY18 - FY21
Source - SRF-JRMC 10JUL2018 WARR



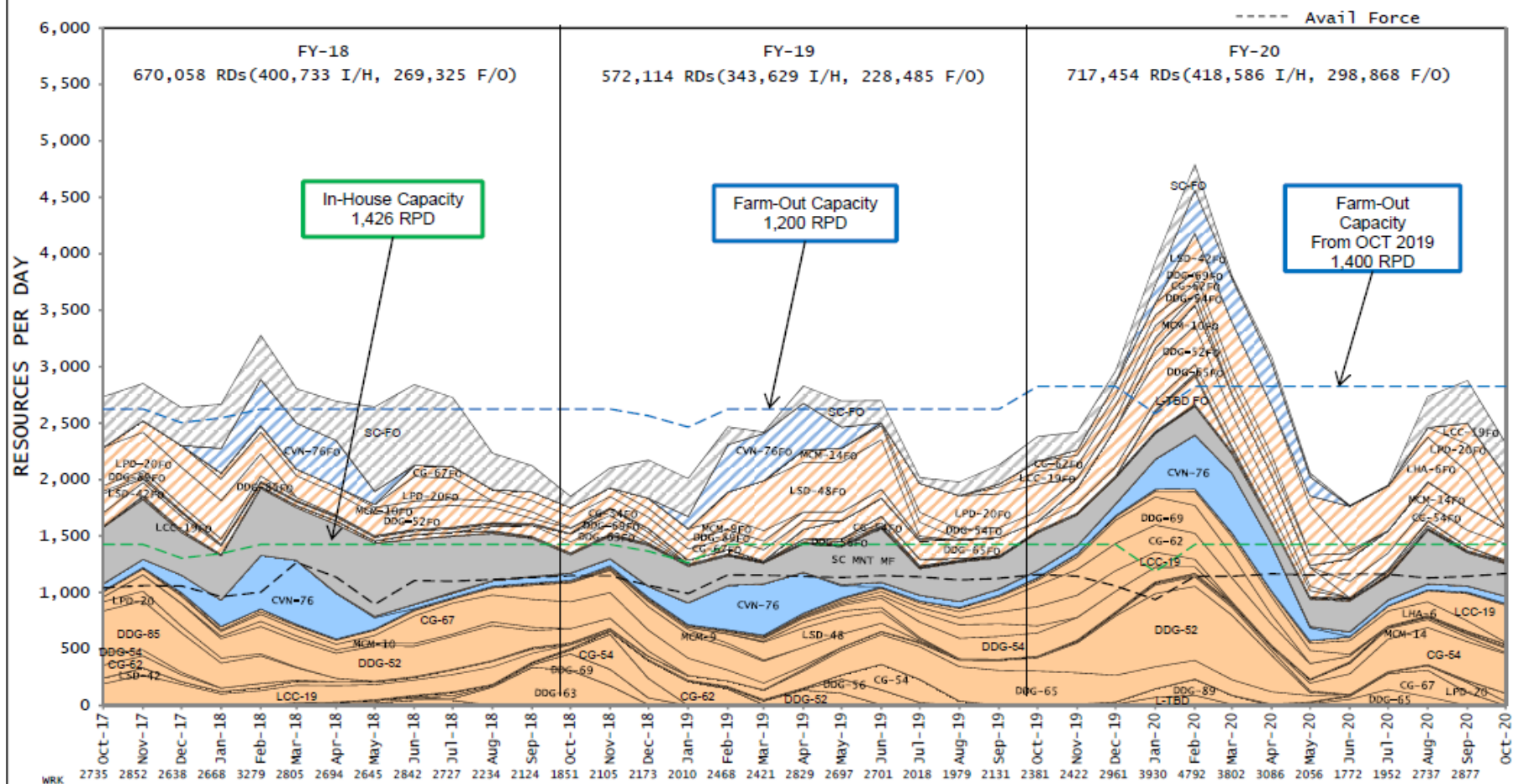
FOUO

Report: WF-220

Data Date: 07/27/18

Yokosuka, Japan - TOTAL
Layercake Graph - 27 Jul 2018
IH/FO Combine Layercake
Total Shipyard (Total)

Date: 08/07/18 08:01:14



Business Sensitive - FOUO



SRF-JRMC SASEBO
Workload Forecast with MOD estimates (no AIT) FY18 - FY20
Source – SRF-JRMC 10JUL2018 WARR

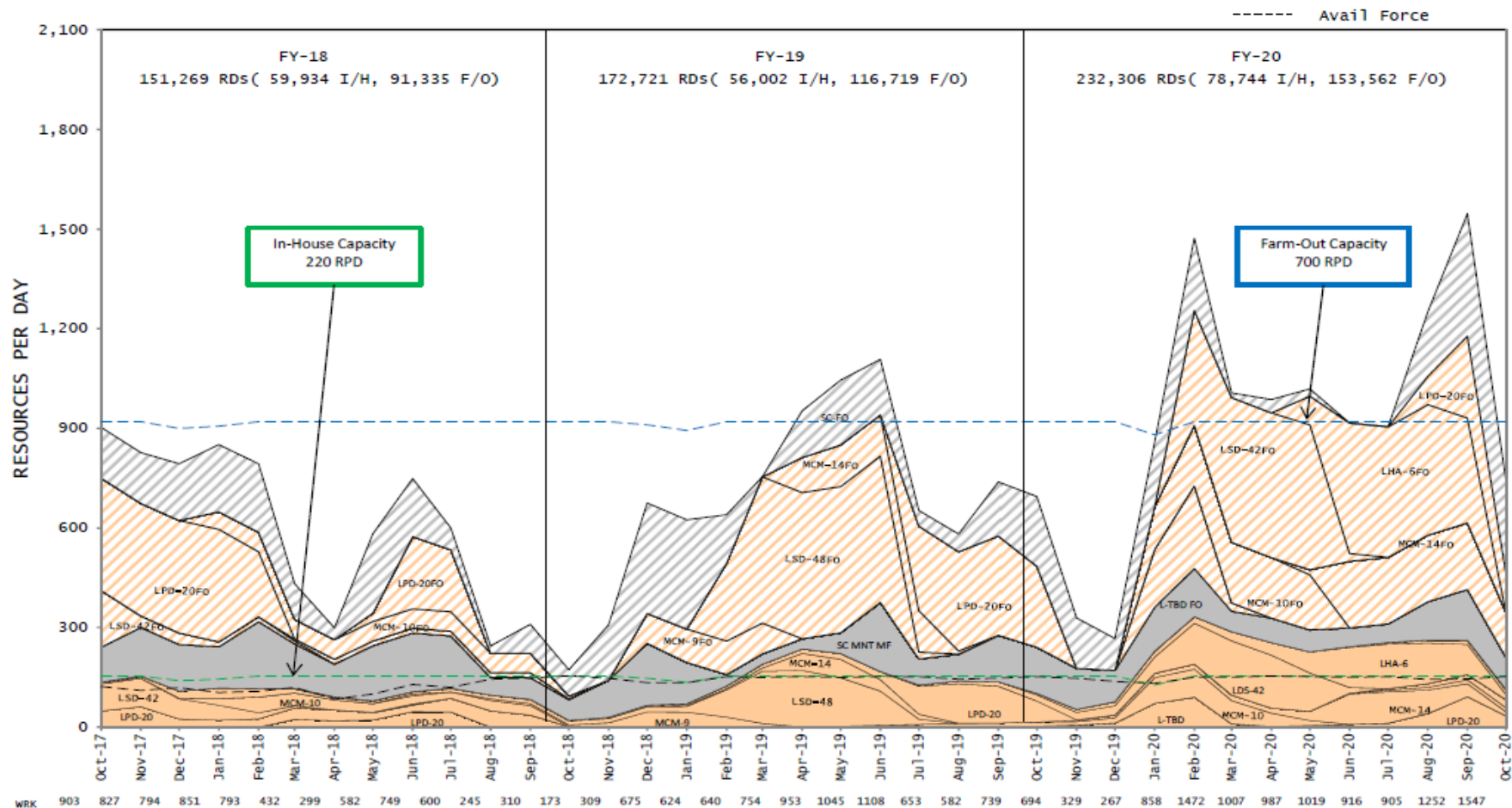


FOUO

Report: WF-220
Data Date: 07/27/18

Yokosuka, Japan - SASE only
Layercake Graph - 27 Jul 2018
IH/FO Layercake Combine
Total shipyard (Total)

Date: 08/03/18 10:47:29



Business Sensitive - FOUO



Questions & Open Discussion



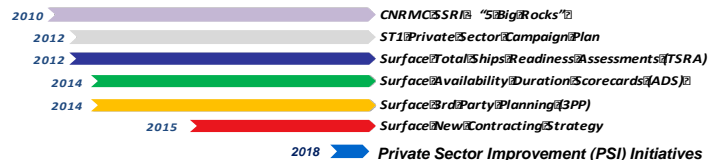
Private Sector Optimization

20 September 2018

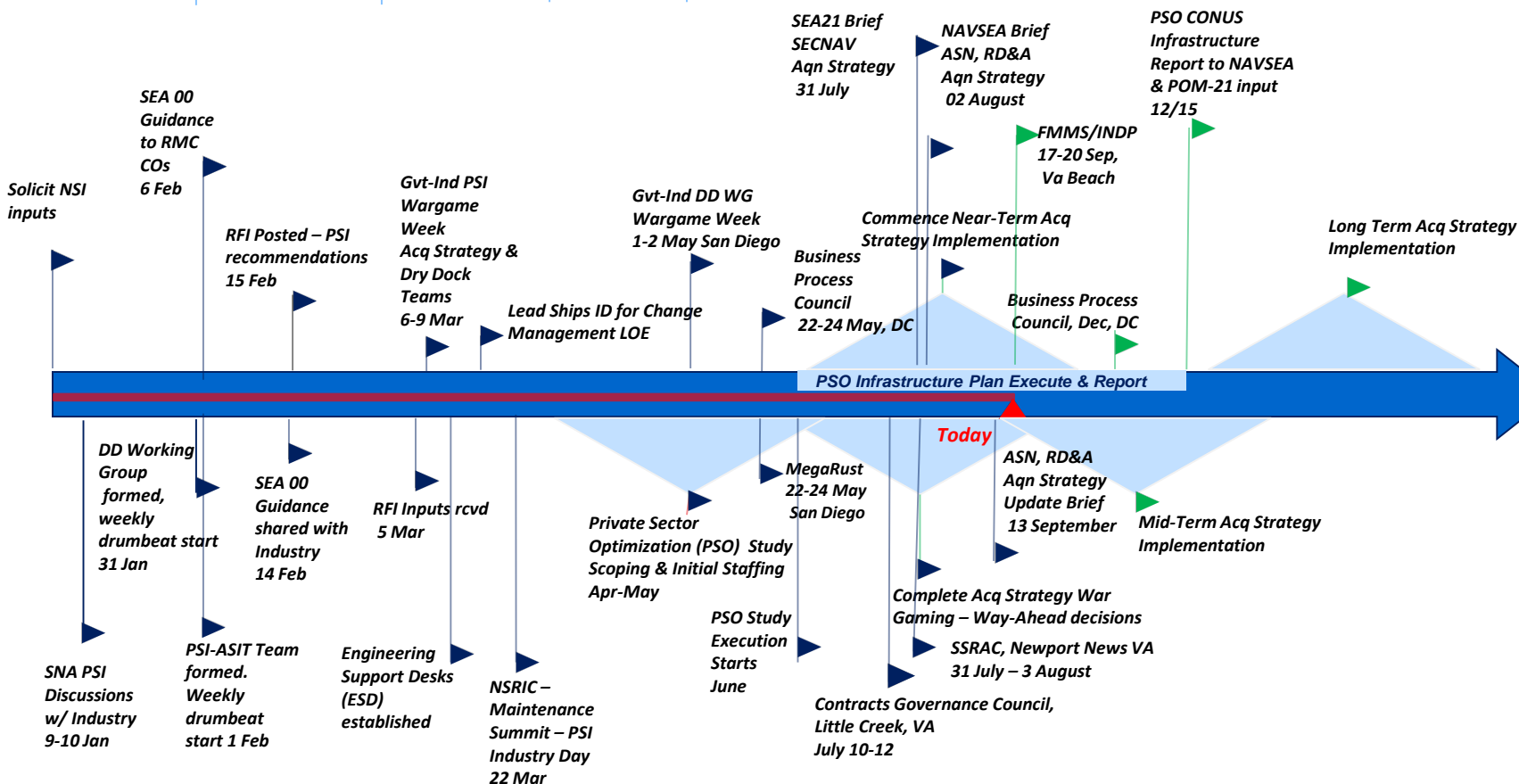
Presented by:
CDR Michael Violette



Building the PSI & PSO Roadmap – Private Sector Improvements & Optimization

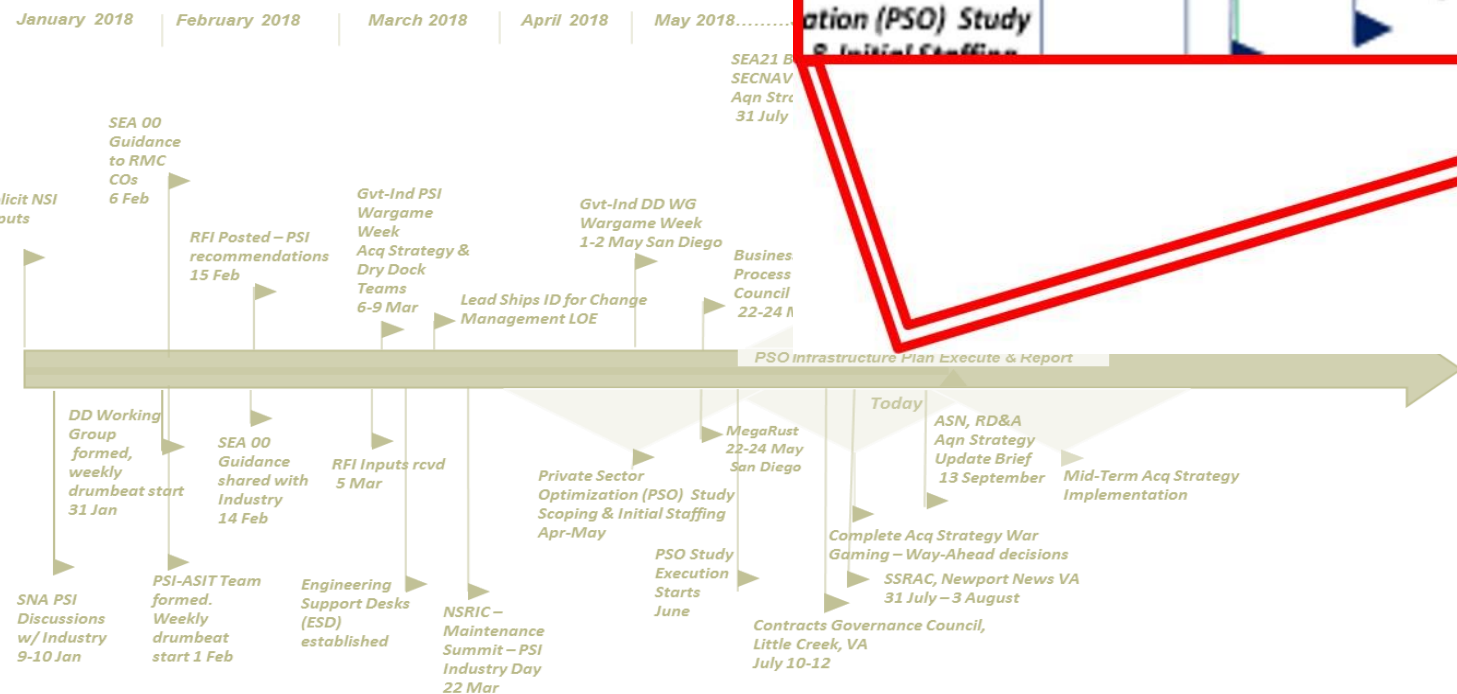
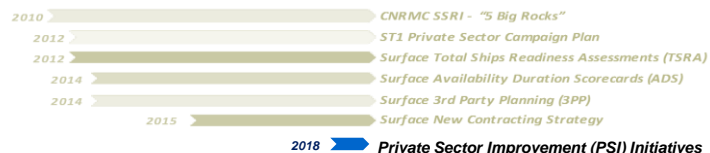


January 2018 | February 2018 | March 2018 | April 2018 | May 2018.....July 2018.....Sep 2018 | 2019 | 2020





Building the PSI & PSO Roadmap – Private Sector Improvements & Optimization



Public & Private Sector Scope Comparison (CONUS/HI Infrastructure Only)

- **Scope differences: As compared to Public Sector study: More elements**
 - **(12 vs. 69 elements), though smaller private facilities**

Public Naval Shipyards

NNSY

PHNSY
& IMF

PSNSY
& IMF

PNSY

Drydocks
Optimization
Capital Equip

Drydocks
Optimization
Capital Equip

Drydocks
Optimization
Capital Equip

Drydocks
Optimization
Capital Equip

REPORT TO CONGRESS

1. Naval Shipyard Dry Dock Capacity & Survivability
2. Naval Shipyard Facilities Optimization
3. Capital Equipment



1. Identified \$21B over 20 years
2. PMS 555 established

12 Elements
(4 yards x 3 elements/yard)

Private Sector Shipyards

BAE (3) ✓

Norfolk
San Diego
Mayport

Drydocks
Optimization
Capital Equip

NASSCO (2) ✓

Norfolk
San Diego

Drydocks
Optimization
Capital Equip

MHI (1) ✓

Norfolk

Drydocks
Optimization
Capital Equip

CMSD (1) ✓

San Diego

Drydocks
Optimization
Capital Equip

VIGOR (1) ✓

Seattle

Drydocks
Optimization
Capital Equip

Colonna (1) ✓

Mayport

Drydocks
Optimization
Capital Equip

Plus 27 Non-complex MAC Holders ✓
via local SRAs

REPORT TO NAVSEA

1. Private Sector Dry Dock Capacity & Survivability
2. Private Sector Facilities Optimization
3. Capital Equipment

69+ Elements
(9 yards x 3 elements/yard) + (5 RMCs x 3 elements/RMC) + 27 Non-complex

Regional Maintenance Centers

MidAtlantic
Regional
Maintenance
Center
(MARMC) ✓

Drydocks
Optimization
Capital Equip

Southwest
Regional
Maintenance
Center
(SWRMC) ✓

Drydocks
Optimization
Capital Equip

Southeast
Regional
Maintenance
Center
(SERMC) ✓

Drydocks
Optimization
Capital Equip

Northwest
Regional
Maintenance
Center
(NWRMC) ✓

Drydocks
Optimization
Capital Equip

Hawaii
Regional
Maintenance
Center
(HRMC) ✓

Drydocks
Optimization
Capital Equip

Public & Private Sector Scope Comparison (CONUS/HI Infrastructure Only)

• PSO Project Progress:

- Approximately 50% complete
- Information gathering stage largely complete
 - Site Visits complete - (follow-ups)
 - GFP RFI: 9 responses
 - DD RFI: 12 responses

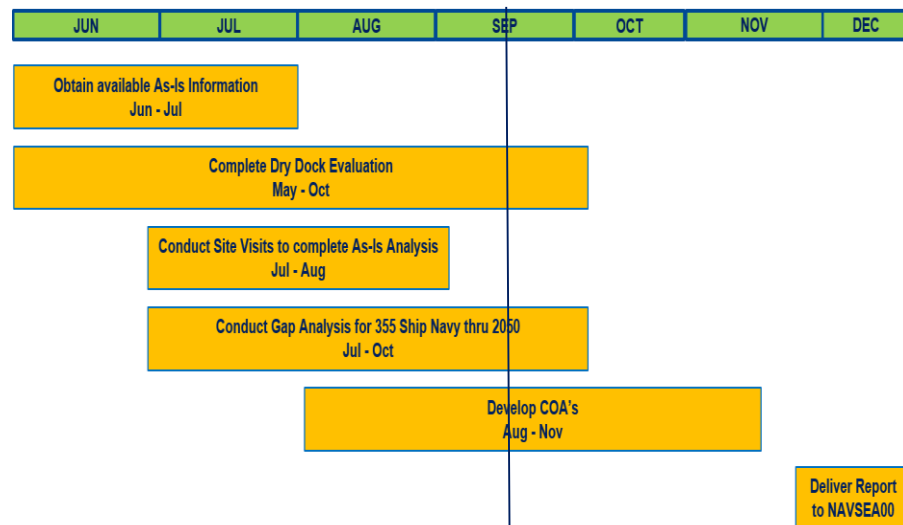
• Workload Model evaluation in progress

• Feedback on Site Visits/Surveys:

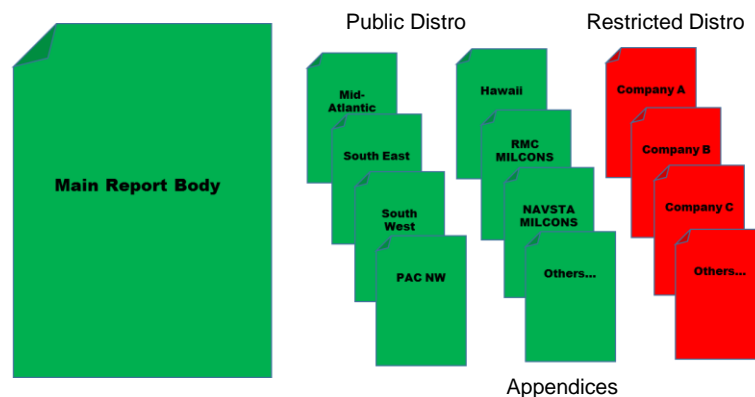
- Met/exceeded expectations
- Numerous Industry Solutions to be incorporated into report as COAs

• Report Draft:

- Direct model of Public SY report
- Company specific appendices (restricted distro)
- Anticipate portions included in 30 year Maintenance & Modernization plan



Report Delivery to NAVSEA: 15DEC

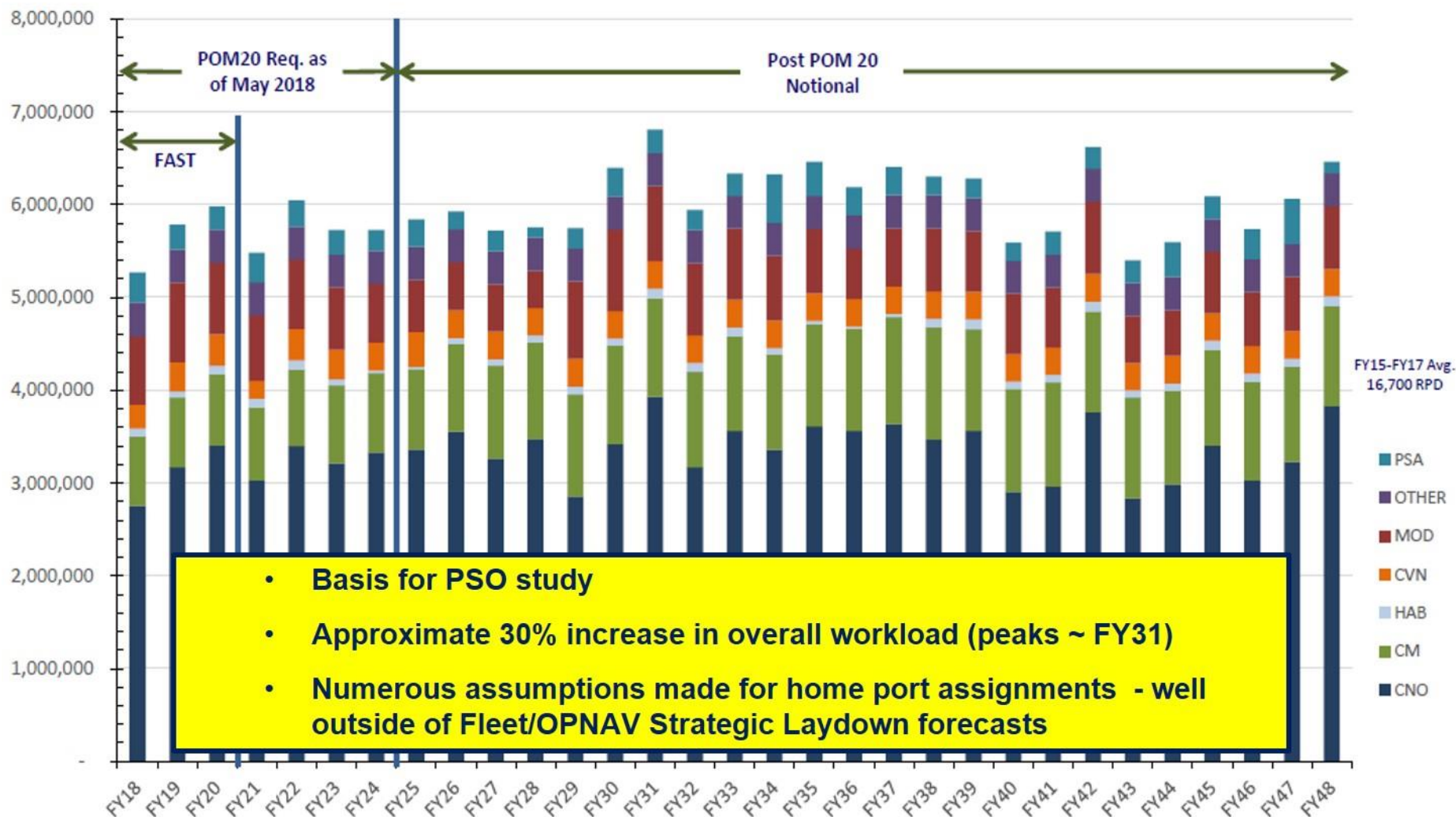


Collaboration with Industry on Company Specific Appendices: 02 NOV

30 Year Workload Projections

Pre-Decisional

Private Sector Workload, Non-Nuclear - Man-Days (MSL)





30 Year Workload Projections: Regional Forecasts



MID-ATLANTIC

	FY18	Peak
CNO Avail Counts:	20	30
Ship Counts:	40	65

SOUTHEAST

	FY18	Peak
CNO Avail Counts:	5	16
Ship Counts:	19	28

SOUTHWEST

	FY18	Peak
CNO Avail Counts:	17	38
Ship Counts:	53	85

PACIFIC NORTHWEST

	FY18	Peak
CNO Avail Counts:	2	16
Ship Counts:	6	16

HAWAII

	FY18	Peak
CNO Avail Counts:	3	14
Ship Counts:	9	15

- Does not account for all of the yet to be approved MSL ships (relative minor adjustment)
- CNO Avail Counts account for avail STARTS – does not include simultaneous execution of crossover of FY
- General assumptions on ship locations



PSO Summary



- **Model evaluation and report writing in progress**
- **Remain on track for 15DEC delivery to NAVSEA**
- **Industry provided quality input**
- **Companies provided opportunity to review appendices**
- **Significant workload increases**



Questions & Open Discussion



PSI – Private Sector Improvement Initiative Updates

20 Sept 2018

Presented to:

Small Business Industry

Presented by:

PSI Leads

Commander, Navy Regional Maintenance Center (CNRM)



PSO & PSI Overview



- **PSO: Surface Ship Industrial Base & Government Infrastructure Capability & Capacity**

1. Dry Docks
2. Facility Optimization
3. Capital Equipment

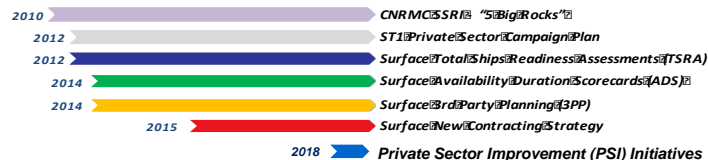
- **PSI: Identified 5 SEA21/CNRMC lines of effort**

1. Industrial Base Health & Workload Stability
2. Contracting & Contract Governance
3. Streamlining Change Management & Oversight
4. Optimizing Availability Execution
5. Improving Maintenance Governance

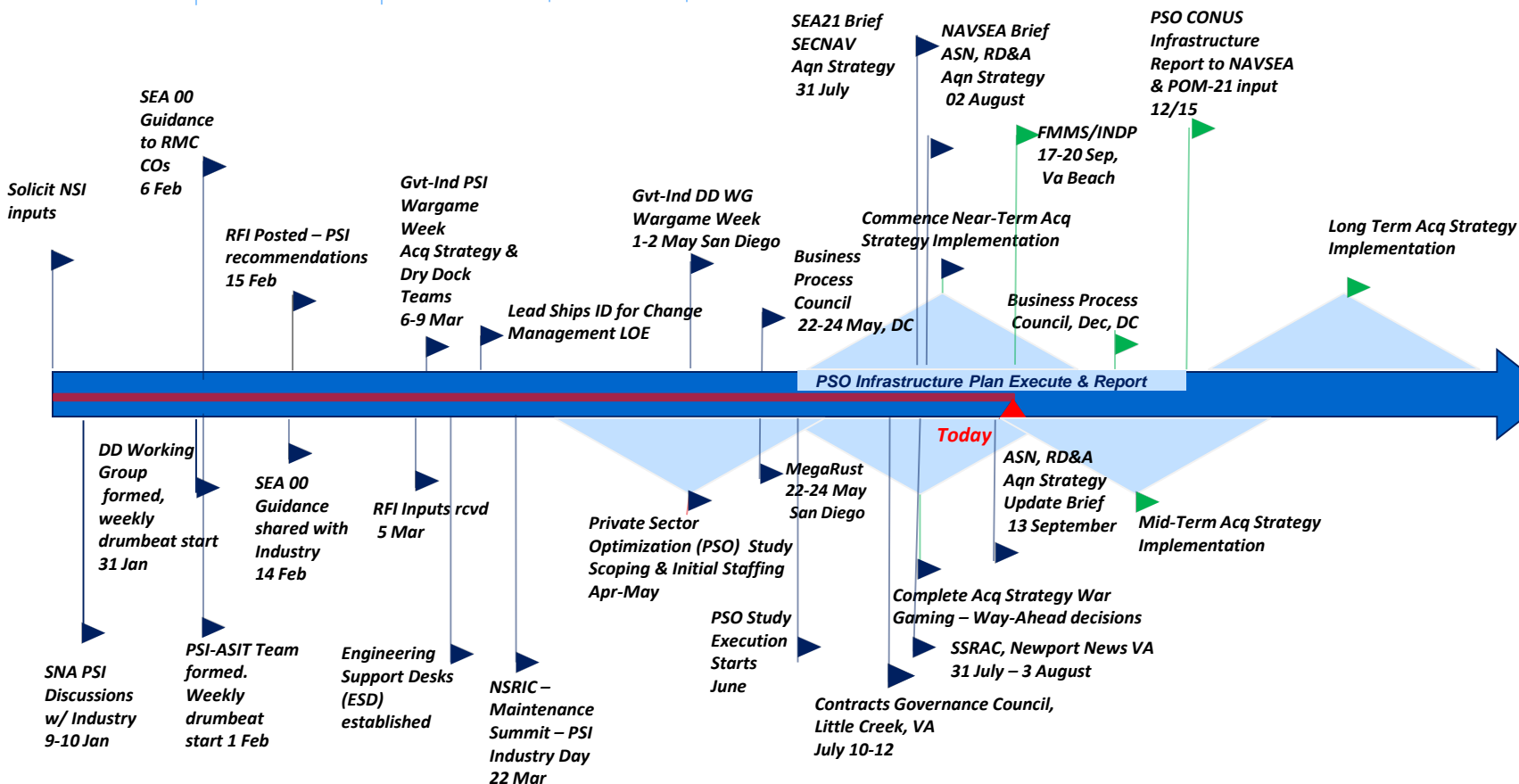
- **Align with 30 Year Maintenance & Modernization Plan**



Building the PSI & PSO Roadmap – Private Sector Improvements & Optimization

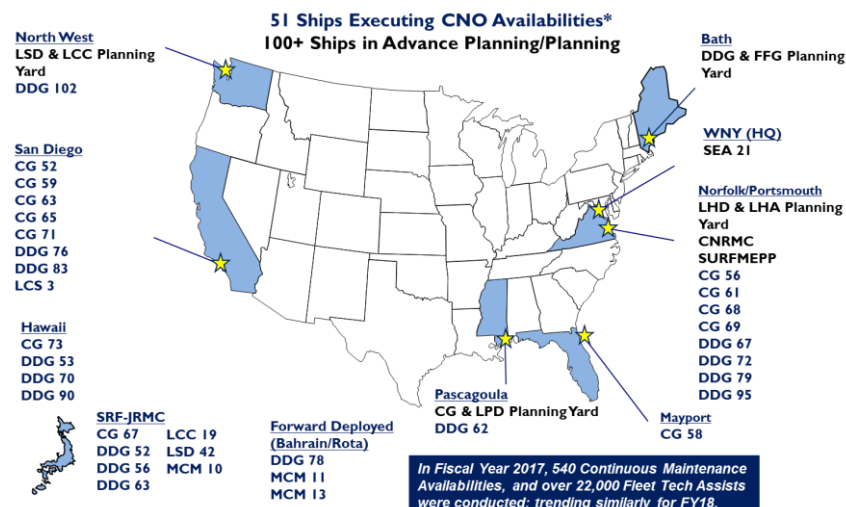
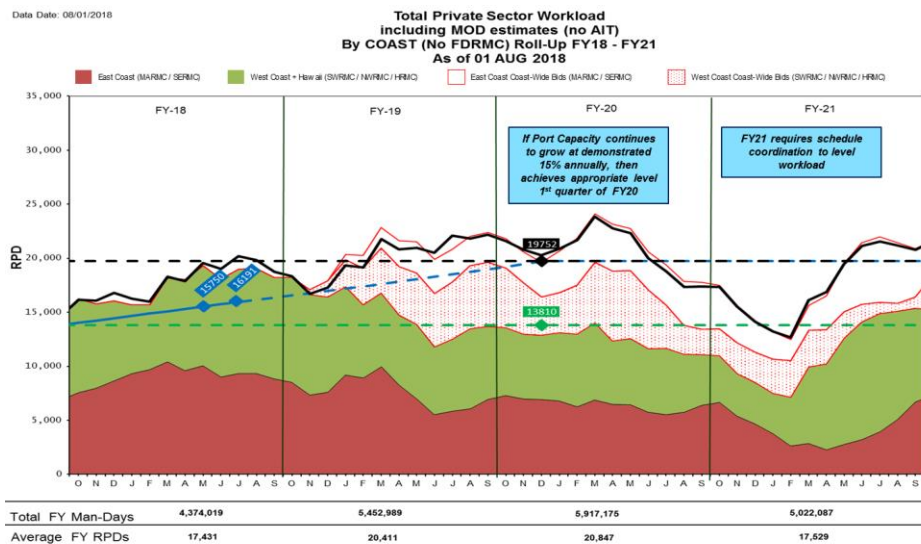


January 2018 | February 2018 | March 2018 | April 2018 | May 2018.....July 2018.....Sep 2018 | 2019 | 2020



1. Industrial Base Health & Workload Stability

- ✓ Integrated PSA Workload impacts w/ POM20 “execute-ability” models
- ✓ NAVSEA “SLEP” Study providing initial input to PSO “Plan for 355”
- ✓ Developed & Refining “Actual vs. Planned” CNO Availability Manning measures to evaluate Industry capacity demand response
- Aligning PSO with 30 Year Ship Maintenance & Modernization Plan
- FMMS/INDP scheduled 20 September





PSI Accomplishments & Actions



2. Contracting & Contract Governance

- ✓ **Contracts Governance Council (CGC) (Gvt-Industry) completed 10-12 July**
- ✓ **Pre-Solicitation Planning Support: Draft Plan under development**
- ✓ **Vertical Availability Grouping (double-dock): ARLEIGH BURKE (DDG 51)/ BULKELEY (DDG 84)/ GUNSTON HALL (LSD 44) – RFP posted. 32 day Industry requested proposal extension granted. Target Award Q1FY19**
 - ☐ **FY19 Grouping scenarios in development**
- ✓ **Shipyard Investment Strategy: Issued RFI 24 July '18, Nine (9) Responses received from Industry on 04 Sep '18**
- ✓ **Earlier Award: POAM rcvd 8 June, evaluated during CGC: Lead ship SHOUP (DDG 86), A-120 award, Nov '18**
- ✓ **Value Adjusted Trade-Off vs. LPTA: Lead Ships (FY19 Availabilities): ARLEIGH BURKE (DDG 51)/ BULKELEY (DDG 84)/GUNSTON HALL (LSD 44) - MARMC - and SHOUP (DDG 86) - NWRMC**
- ✓ **Acquisition Strategy Update Brief to SECNAV completed 31 July**
- ✓ **Acquisition Strategy Update Brief to ASN, RD&A completed 02 August**
- ✓ **Acquisition Strategy Update Brief to ASN, RDA completed 13 September**
- ☐ **Fleet Maintenance & Modernization Summit (FMMS) Industry Navy Discussion Panel (INDP) scheduled for 20 September '18**
- ☐ **Horizontal Availability Grouping: Initial review completed 21 June. Further evaluation in progress. (Target FY20 Availabilities)**



PSI Accomplishments & Actions



3. Streamlining Change Management & Oversight

☐ Contract Change Management Initiative

☐ LOE to Completion CLIN (Phase 1)

- ✓ Lead Ships: SAN DIEGO (LPD 22) - SWRMC - March '18 Award, 29 May '18 Start / HIGGINS (DDG 76) - SWRMC - July '18 Award, 05 November Start / MONTEREY (CG 61) – MARMC - July '18 Award, 10 September '18 Start
- ✓ Included in all new CNO RFPs moving forward
- ✓ Approval received from ASN (FMC), ASN (FMB), ASN (FMP) – 29 June '18
- ✓ Currently included on 18 different CNO Avails in solicitation and/or execution

☐ Small Dollar Value Change (Phase 2)

- ✓ Lead Ships: SHOUP (DDG 86); O'KANE (DDG 77); ARLEIGH BURKE (DDG 51)/ BULKELEY (DDG 84)/ GUNSTON HALL (LSD 44)
- ✓ Included in all new CWB RFPs moving forward
- ✓ Currently included on 6 different CNO Avails in solicitation

☐ Contract Change Management Joint Policy Memo – In final review for signature: ECD – Sep '18

☐ “Roadshow”/VTC scheduling in progress



PSI Accomplishments & Actions



3. Streamlining Change Management & Oversight (cont.)

- ❑ NAVSEA Standard Items (NSIs)
 - ✓ Industry proposed changes to 97 of 116 NSIs
 - ✓ Completed 114 of 116 (98%) NSI Reviews
 - ✓ 283 of 287 proposed changes addressed (99%)
 - ✓ 4 changes to FY19 NSIs promulgated
 - ✓ Results
 - ✓ Eliminated 13 NSIs (11%)
 - ✓ Eliminated 22 Required Reports (CFRs)
 - ✓ Eliminated 26 Checkpoints (Total 30% reduction to date)
 - ✓ Changed 4 NSIs from CAT I to CAT II (CAT I : invoked on all contracts – CAT II : invoked based on work performed)
- ❑ 4 NSI changes evaluated at SSRAC (3 August) – 1 resolved, 3 with CNRMC for final adjudication



PSI Accomplishments & Actions



3. Streamlining Change Management & Oversight (Cont.)

☐ Checkpoint Reduction Initiative

- ✓ POAM developed with Industry (completed 10 May)
- ✓ Through NSI review & SSRAC, completed total 30% reduction in checkpoints (I/V/G)
- ✓ NSI Checkpoint Changes incorporated into FY19 CH4 (Posted 8/31)
- ☐ Master Spec Catalogue system-by-system checkpoint review with industry has begun. Standard Work Templates for main shafting, associated bearings and propellers have been passed to industry for review.
- ☐ Pilot availability approach and identification of pilot ships is in progress. (ECD 18 September)

☐ Engineering Support Desk (ESD)

- ✓ All RMCs ESDs stood up
- ☐ Incorporate standard RMC/Industry execution & awareness
- ☐ Track Engineering Service Request (ESR) closure time as measure of effectiveness (in development)

☐ Standardize Process Control Procedures (PCPs)

- ☐ DRAFT CNRMC Instruction -Technical Control Procedure (TCP) –. CNRMC Instruction in draft. ECD 09 October for final RMC review.
- ☐ Identification of electronic storage location – NMD Reference Library designated



PSI Accomplishments & Actions



4. Optimizing Availability Execution

☐ WASP Lessons Learned

- ✓ Incorporated in all LHA/D avail planning, provided for other ship classes
- ✓ Growth Management (See Previous)
- ✓ Engineering Support Desk (See Previous)

☐ Joint RMC-IND “Tabletops” – Critical/Controlling Path

- ✓ NWRMC Lead Ship: KIDD (DDG 100) –9 March Start, Follow: SAMPSON (DDG 102) 16 July Start
- ☐ MARMC Lead Ships: GUNSTON HALL (LSD 44)/ARLEIGH BURKE (DDG 51)/ BULKELEY (DDG 84) (MARMC) – Observed NWRMC SAMPSON Tabletop 26 June
- ☐ SWRMC: Lead ship identification in progress

☐ Readiness-to-Start Criteria

- ☐ CNRMC RTS Instruction revision to reflect formal brief rqmt (ECD 01 Dec – Post BULKELEY/ ARLEIGH BURKE/ GUNSTON HALL Solicitation/Award/WPER)
 - ☐ Exit Criteria for Work Package Execution Review



PSI Accomplishments & Actions



4. Optimizing Availability Execution (cont.)

- ☐ Dry-Dock Working Group (DDWG)
 - ☐ Next DDWG F2F sked 17 Sept 2018
 - ☐ Future 1 on 1 GVT/Industry meetings
 - ☐ Dock certification/Recert process
 - ☐ RFI to identify additional dry dock resources, 11 inputs received 4 September – under evaluation
 - ☐ Reduce Dock Duration
 - ✓ Reduce OEM Rqmt: CNRMC SME Guidance Issued
 - ☐ Reduce Technical Requirement
 - ☐ Shaft Process Control Procedure (PCP) elimination. Working with SURFMEPP to jointly change CSWT & PCP requirement
 - ☐ Hull Paint requirement – paint warranties, paint representatives, changes to 009-32
 - ☐ NEWCON vs Repair specs – NAVSEA05 Study Guide completed. Studies funded
 - ☐ Capital Investments (Rotable Pools, Special Tooling Pools) – WGs established
 - ✓ Shafting Rotable pool funding shifted from 2S to 7H cog (to NWCF)
 - ☐ Extend Docking Cycles
 - ☐ LCS Review in progress SEA05/PMS505
 - ☐ Other ship classes: SEA05 Study Guide complete – Final study funded



PSI Accomplishments & Actions



5. Maintenance Governance

☐ GVT-IND PMT Team Building

- ✓ SCA Rep participation in ST1 ESC (11 June)
- ☐ Further ST1 participation by Industry pending Legal Review/input (ESC/KSNs/CoPs)
 - ☐ Capturing Carrier Team One best practices in gaining Industry participation, teambuilding
 - ☐ NDA requirement for ST1 ESC.
 - ☐ Working with 00L on guidance for Industry participation at MMPRs, KSNs, CoPs

☐ Recognition of Successful Projects

- ✓ Included on 26-28 June MMPR & all future MMPRs
- ☐ Identify common traits for successful Projects - capture “Must-Do” relevance
- ☐ Develop Project Management Team churn measure/feedback process

☐ Maintenance Team Training

- ☐ Updating WFD courses & IPTD events
- ☐ Make PT’s goal: Get to “Yes”



PSO & PSI Executive Summary



☐ Progress Across all PSO & PSI Lines of Effort

- ✓ PSO “As-Is” Site Visits Completed, Results being compiled for “To-Be” analysis

- ☐ Future Laydown Projections release required to complete PSO “To-Be” analysis

- ☐ PSI Contracting Strategies & Change Management

 - ✓ Contracting Change Management Initiatives approved

 - ☐ Acquisition Strategy study & recommendation ongoing

- ☐ PSI Dry Dock Working Group actions in progress evaluating requirement reductions to reduce time-on-blocks

- ☐ IND participation in ST1 ESC/KSN/CoPs pending Legal Review

☐ Alignment with 30 Year Ship Maintenance & Modernization Plan



Questions & Open Discussion



Small Business & Non-Complex MAC Update

September 20, 2018

Presented to:

**Small Business Roundtable
FMMS INDP**

Presented by:

CAPT Tommy Neville

Director of Contracts
Commander, Navy Regional Maintenance Center



Agenda



- Execution Contract Strategy Update
- Ships in Execution
- Complex vs. Non-Complex Discussion
- Small Business Potential Opportunities
- Questions & Open Discussion

Availability Execution Contracts

Pacific Northwest

• Complex Lot I FY18

- General Dynamics NASSCO
- Pacific Ship Repair
- Vigor

• Non Complex Lot II (SBSA) FY18

- Delphinus Engineering
- Pacific Ship Repair
- Propulsion Controls
- Tecnico Corporation

San Diego, CA

• Complex MAC-IDIQ FY16

- BAE Systems
- General Dynamics NASSCO
- Continental Marine

• Non Complex MAC-IDIQ (SBSA) FY17

- Controls Engineering
- East Coast Repair
- Epsilon Systems
- Marine Group Boat Works
- Pacific Ship Repair
- Propulsion Controls Engineering
- South Coast Welding

Pearl Harbor, HI

- TBD

Norfolk, VA

• Complex MAC-IDIQ FY16

- BAE Systems
- General Dynamics NASSCO
- Marine Hydraulics (MHI)

• Non Complex MAC-IDIQ(SBSA) FY17

- Advance Integrated Technology
- Auxiliary Systems, Inc.
- Colonna's Shipyard
- Continental Tide Defense Systems
- East Coast Repair and Fabrication
- Epsilon System Solutions
- LPI Technical Services
- Lyons Shipyard
- Marine Hydraulics
- Tecnico Corporation

Mayport, FL

• Complex Lot I FY17

- BAE Systems
- Colonna's Shipyard
- General Dynamics NASSCO

• Non Complex Lot II FY17

- BAE Systems
- Colonna's Shipyard
- East Coast Repair and Fabrication
- General Dynamics NASSCO
- North Florida Shipyard
- Tecnico Corporation



Surface Ships in Availabilities

51 Ships Executing CNO Availabilities*
100+ Ships in Advance Planning/Planning

North West

LSD & LCC Planning
Yard
DDG 102

San Diego

CG 52 LHA 6
CG 59 LHD 8
CG 63 LPD 18
CG 65 LPD 22
CG 71 LSD 45
DDG 76 LSD 52
DDG 83 MCM 4
LCS 3

Hawaii

CG 73
DDG 53
DDG 70
DDG 90

SRF-JRMC

CG 67 LCC 19
DDG 52 LSD 42
DDG 56 MCM 10
DDG 63

Forward Deployed (Bahrain/Rota)

DDG 78 PC 2
MCM 11 PC 7
MCM 13 PC 11

Pascagoula

CG & LPD Planning Yard
DDG 62

Mayport

CG 58

Bath

DDG & FFG Planning
Yard

WNY (HQ)

SEA 21

Norfolk/Portsmouth

LHD & LHA Planning
Yard
CNRMC
SURFMEPP

CG 56 DDG 103
CG 61 LHD 5
CG 68 LPD 17
CG 69 LPD 19
DDG 67 LSD 41
DDG 72 LSD 46
DDG 79 LSD 50
DDG 95 PC 13



In Fiscal Year 2017, 540 Continuous Maintenance Availabilities, and over 22,000 Fleet Tech Assists were conducted; trending similarly for FY18.

Last Update
11 Sept 18

* Does not include PSA ships



Complex vs. Non-Complex Discussion



Norfolk, VA

- Complex: 3 Awardees (Awarded May 2015)
- Non-Complex: 10 Awardees (Awarded Sept. 2017)

San Diego, CA

- Complex: 3 Awardees (Awarded Dec. 2015)
- Non-Complex: 7 Awardees (Awarded May 2017)

Pacific Northwest

- Complex: 3 Awardees (Awarded May 2018)
- Non-Complex: 4 Awardees (Awarded May 2018)

Guidelines and Procedures for Complex & Non-Complex IDIQ-MAC Utilization:

Applicability

- All emergent, scheduled, continuous maintenance, modernization, and repair requirements for CM & EM availabilities conducted under the Complex and Non-Complex IDIQ-MACs.

Intent

- To ensure all possible CM/EM availability opportunities are afforded to Small Businesses.

Process

- Project Manager (PM) will make contract vehicle recommendation to Administrative Contracting Officer (ACO) no later than A-85.
- The Contract Decision Point will be made by the ACO no later than A-83.

Deviations

- Utilizing the Non-Complex IDIQ-MAC for work on critical systems as defined in CNRMCINST 4700.5B.
- Utilizing the Complex IDIQ-MAC for work not on critical systems.



MARMC CMAV MACMO Utilization

36 CMAV Delivery Orders issued since February 2018

CMAV Delivery Orders February 2018 – September 2018:

- 71% issued on the
NON-COMPLEX IDIQ-MAC

	FEB	MAR	APR	MAY	JUN	JUL	AUG	SEP	
LSD/LPD	0	0	0	0	0	0	0	0	
LHA/LHD	0	0	0	0	0	0	0	0	
DDG	1	2	4	4	0	3	5	1	
CG	1	0	0	1	3	1	1	0	Total
Total	2	2	4	5	3	4	6	1	27

- 29% issued on the
COMPLEX IDIQ-MAC

	FEB	MAR	APR	MAY	JUN	JUL	AUG	SEP*	
LSD/LPD	0	1	1	0	1	1	0	1	
LHA/LHD	0	0	0	0	1	0	0	1	
DDG	3	1	0	0	0	0	0	0	
CG	0	0	0	0	0	0	0	0	Total
Total	3	2	1	0	2	1	0	2	11

*Anticipated September Delivery Order Awards

MARMC Projected CMAV Workload: FY19 Q1 – Q2

	Q1	Q2	
LSD/LPD	3	4	
LHA/LHD	1	1	
DDG	18	11	
CG	5	5	Total
Total	27	21	48

MARMC “No Bid” Data: February – September 2018

	FEB	MAR	APR	MAY	JUN	JUL	AUG	SEP	
LSD/LPD	0	0	0	0	0	0	0	0	
LHA/LHD	0	0	0	0	0	0	0	0	
DDG	4	0	0	0	0	0	0	0	
CG	2	0	0	0	0	0	0	0	Total
Total	6	0	0	0	0	0	0	0	6



SWRMC CMAV MACMO Utilization



30 CMAV Delivery Orders issued since February 2018

CMAV Delivery Orders February 2018 – September 2018:

- 90% issued on the
NON-COMPLEX IDIQ-MAC

	FEB	MAR	APR	MAY	JUN	JUL	AUG	SEP*	
LSD/LPD	1	2	0	3	0	1	1	2	
LHA/LHD	2	0	0	1	0	2	0	0	
DDG	1	1	4	0	3	1	5	2	
CG	1	0	2	0	0	0	2	1	Total
Total	5	3	6	4	3	4	8	5	33

- 10% issued on the
COMPLEX IDIQ-MAC

*Anticipated September Delivery Order Awards

	FEB	MAR	APR	MAY	JUN	JUL	AUG	SEP*	
LSD/LPD	0	0	0	0	0	0	0	0	
LHA/LHD	0	0	0	0	0	0	0	1	
DDG	0	0	0	0	0	0	0	1	
CG	1	0	1	0	0	0	1	0	Total
Total	1	0	1	0	0	0	1	2	4

*Anticipated September Delivery Order Awards

SWRMC Projected CMAV Workload:

FY19 Q1 – Q2

	Q1	Q2	
LSD/LPD	3	9	
LHA/LHD	0	0	
DDG	10	10	
CG	0	1	Total
Total	13	20	33

SWRMC “No Bid” Data: February – September 2018

	FEB	MAR	APR	MAY	JUN	JUL	AUG	SEP	Total
TOTAL	0	0	0	0	0	0	0	0	0



Potential Areas of Small Business Participation



✓ Planning (work spec development)

- CG/DDG (QED)
- LHA/LHD (QED)
- LPD/LSD (QED)
- MCM/PC (RMC)
- LCC (SRF)

✓ Drawing Development

- CG/LPD/some LHA/LHD (HII)
- DDG (BIW)
- LHA/LHD (NNSY)
- LSD/LCC/MCM/PC (PSNSY)

✓ LLTM Procurement, Kitting, Shipping & Storage

- CG/LPD (HII)
- DDG (BIW)
- LHA/LHD/LSD (RMC C500/C400)
- MCM/PC (NNSY)
- LCC (SRF)

✓ Alteration Installation Teams (AITS)

- All ship classes (NSWC Philadelphia)
- DDG/CG (NAWC-AD)
- Amphibious Ships (SPAWAR Charleston)

✓ Pre-Fabrication (Electrical)

- DDG (BIW)
- CG (HII)

✓ Pre-Fabrication (Structural)

- CG (HII)
- DDG (NAWC-AD/BIW)



Questions & Open Discussion



Questions/Answers and Meeting Wrap Up

20 Sept 2018

Presented to:
Small Business Industry

Presented by:
CAPT Tommy Neville
Director of Contracts, Navy Regional Maintenance Center
(CNRMC)